



The Comet's Tale

BUDGET EDITION

2021-2022

Sandy Creek Unveils Valedictorian, Salutatorian for Class of 2021

In-Person Budget Vote and Election

Tuesday,
May 18, 2021
Noon to 8 p.m.

Sandy Creek District Office
Board Room
(Absentee Ballots by request)

Budget Hearing

Thursday,
May 6, 2021
6 p.m.

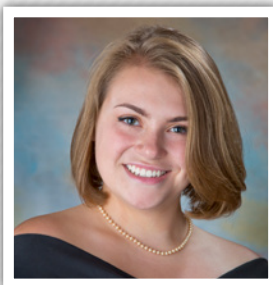
Sandy Creek District Office
Board Room

Board Vacancy

Two (2) - Five (5) Year Terms

John Macklen
Mark Haynes
Kevin Halsey

See Candidate Profiles at
www.sandycreekcsd.org/district/boe/surveys



Emma McDougal

Valedictorian

Emma McDougal

Parents:

Angela and Jeff McDougal

College Plan:

Binghamton University,
Major - Undeclared/
Linguistics

Activities: Drama Club,
National Honor Society,
Science Club, Spanish

Club, Student Council, Varsity Volleyball

Advice: "Be willing and excited to learn, to gain knowledge of the world and the people around you, and you will find that life becomes a little bit brighter, a bit more fulfilling. Use that as your spark to be the person you want to be."



Michaela Kastler

Salutatorian

Michaela Kastler

Parents:

Katie and Scott
Kastler

College Plan:

Clarkson University,
Major - Psychology
with career goal
of becoming a
psychiatrist

Activities: Show Choir, All County Chorus,
Marching Band, National Honor Society SADD,
Science Club, Spanish Club, LOCY, Varsity Soccer

Advice: "Do not compare yourself to others. Everybody learns at a different pace, has different strengths, and has different weaknesses. It is okay to focus on yourself, as long as you are doing your best, that's all you can ask of yourself."



Capital project update: Steady progress continues on Phase II

Work is progressing as construction continues on Sandy Creek's capital project campaign.

In the April report to the Board of Education, the School District's Construction Manager, Todd LaBarr of Watchdog Building Partners, said there has been solid progress on the new bus maintenance facility and the new gymnasium entrance. About 32 percent of the construction work for Phase II of the project, approved in 2018 by voters, is complete.

The store front system and Terrazzo flooring have been installed for the gymnasium entrance.

In addition, all of the necessary classroom heating units have been replaced and the electrician has finished upgrading the high school and middle school fire alarm systems.

The high school's front entrance door hardware replacement has also been completed.

The structural steel for the new bus maintenance facility has been erected, and the roofing contractor is preparing to install the new roof system. The other trades are also installing all of the new building's underground utilities in preparation to pour the concrete floor slab.

Other projected work for the bus maintenance facility includes plumbing and electric work, an installation for the primary power feed cable, the installation of the roof system and bus lift and sealing the building's exterior masonry units.

For the main building, work will continue on upgrading classroom and office climate controls in addition to refurbishing existing stonework and air handling units.

The Board of Education receives a monthly update on the capital project at its public meetings.

Comet Pride is Community Wide



Proposition #1:

Shall the proposed budget of \$24,416,606 for the Sandy Creek Central School District, Oswego County, New York as recommended by the Board of Education for the fiscal year beginning July 1, 2021, be adopted and shall the Board of Education be authorized to levy the necessary tax therefore?

Proposition #2:

Resolved, that pursuant to Education Law, Section 259, the Board of Education of the Sandy Creek Central School District is authorized to levy and collect an annual tax, year after year, separate and apart from the annual school district budget, the additional amount of \$55,000 (above the current amount of \$94,000 for a total of \$149,000), which shall be paid to the Annie P. Ainsworth Memorial Library (\$50,000 for total of \$125,000), and the Cogswell Free Library (\$5,000 for a total of \$24,000) for the support and maintenance of the libraries; with this appropriated amount to be the annual appropriation until thereafter modified by a future vote of the electors of the Sandy Creek Central School District.



PROGRAM COMPONENT	DESCRIPTION	2020-2021	2021-2022
Curriculum, Administration & Planning	Includes all costs associated with staff development and costs directly associated with instruction	\$474,966	\$598,204
Regular School	All costs associated with Instruction, Library & Media, and Computer Technologies	\$6,305,364	\$6,356,869
Special Education Programming	All costs associated with the Education of Students with disabilities/handicapping conditions	\$2,383,101	\$2,419,750
Special Schools	All costs associated with BOCES Occupational Education and Summer School	\$1,060,000	\$1,043,000
Student Services	All costs associated with Guidance Services, Co-Curricular Activities, Interscholastic Sports, Transportation, and School Food Service	\$2,283,954	\$2,228,018
Employee Benefits	All employee benefit costs associated with above program component salaries	\$5,317,632	\$5,434,275
TOTAL PROGRAM		\$17,825,017	\$18,080,116

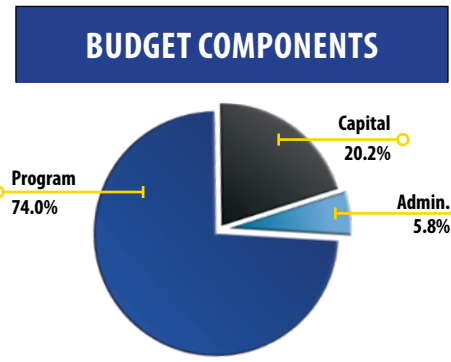
CAPITAL COMPONENT	DESCRIPTION	2020-2021	2021-2022
Special Item	Refunds of Real Property Taxes – Prior years	\$5,000	\$5,000
Operation of Plant	All costs associated with operating district buildings, including cleaning and utilities costs	\$1,059,610	\$1,109,188
Maintenance of Plant	All costs associated with maintaining district buildings and property	\$638,500	\$649,930
Transportation	Including the purchase of (2) 66 passenger buses for 19-20 and (2) 29 passenger and (1) 66 passenger bus for 20-21	\$276,035	\$367,115
Debt Service	Includes the principal and interest costs for the past capital project and fiscal agent fees	\$1,054,437	\$2,024,599
Employee Benefits	All employee benefit costs associated with above capital component salaries	\$673,364	\$666,178
Interfund Transfer	Interfund transfer to the Capital fund for 20/21 and 21/22 modernization of hydraulic passenger elevator(s)	\$100,000	\$100,000
TOTAL CAPITAL		\$3,806,946	\$4,922,010

The Sandy Creek Central School District in accordance with the Title IX of the Educational Amendments of 1972 and section 504 of the Rehabilitation Act of 1973 and does not discriminate on the basis of sex or handicap in the educational programs or activities it operates. This includes recruitment and employment of employees; pay and benefits; counseling services for students; access by students to educational programs, courses and activities. The District's Title IX Compliance Coordinator is Shelley Fitzpatrick (124 Salisbury Street, Sandy Creek, NY 13145 | 315-387-3445).



ADMINISTRATIVE COMPONENT	DESCRIPTION	2020-2021	2021-2022
Board of Education	All costs associated with the Board of Education, District Clerk and Elections	\$80,023	\$81,992
Central Administration	All costs associated with the Superintendent's Office	\$191,500	\$195,620
Regular School Supervision	All costs associated with the Supervision of Curriculum, Principals, Supervision of Handicap, and Computer Instruction	\$272,696	\$129,005
Finance	All costs associated with the Business Office, Auditing, District Treasurer, Tax Collection, and Liability Insurance	\$364,899	\$340,442
BOCES Administrative Costs	BOCES administrative and capital budgets, printing and planning	\$338,023	\$331,522
Employee Benefits	All employee benefit costs associated with above administrative component salaries	\$361,732	\$335,899
TOTAL ADMINISTRATIVE		\$1,608,873	\$1,414,480

BUDGET COMPONENTS	2020-2021	2021-2022	% OF TOTAL BUDGET
Program	\$17,825,017	\$18,080,116	74.0%
Capital	\$3,806,946	\$4,922,010	20.2%
Administrative	\$1,608,873	\$1,414,480	5.8%
TOTAL BUDGET	\$23,240,836	\$24,416,606	



PROJECTED REVENUES	2020-2021	2021-2022
Other Tax Items Collected Interest and Penalties on Real Property Taxes and Pilots (Payments in lieu of taxes)	\$25,000	\$27,100
Uses of Money and Property Interest Earnings and Commissions	\$8,500	\$29,250
Sale of Property and Compensation for Loss Sales of Surplus and Lost Item reimbursements	\$16,000	\$15,000
Refund of Prior Year's Expenditures-BOCES and Other Sources BOCES contracted services expenses from prior year	\$190,000	\$165,000
Miscellaneous Other unclassified revenues, gifts and donations	\$1,000	\$750
State and Federal Aid NYS Education Aid, Federal Medicaid Reimbursement	\$15,099,955	\$16,943,465
Interfund Transfers and Uses of Reserves Transfers from the Debt Service Fund and other employee benefits reserves	\$798,926	\$183,984
Appropriated Fund Balance Fund balance for use in the upcoming year	\$150,000	\$185,275
Estimated Tax Levy Estimated amount of Tax Levy	\$6,951,455	\$6,866,782
TOTAL PROJECTED REVENUES	\$23,240,836	\$24,416,606

**Sandy Creek Central
School District**
P.O. Box 248
124 Salisbury St.
Sandy Creek, NY 13145

Non-Profit
US Postage Paid
Permit No. 7
Zip Code 13145

Phone: 315-387-3445
Fax: 315-387-2196
District Office: Ext. 1510
Business Office: Ext. 1510
Elementary: Ext. 1110
Middle School/High School: Ext. 1910
Nurses' Offices: Ext. 1501
Elementary - Ext. 1503; **HS -** Ext. 1505
Transportation: Ext. 3330

Postal Patron

Sandy Creek Central School District

2020-21 Board of Education
John Shelmidine, Pres.
Brian MacVean, VP
Mark Haynes
Joseph Hathway
Heidi Metott
Andrea Harris
Michele Warner

Superintendent:
Mr. Kyle L. Faulkner

**Business Administrator/
District Clerk:**
Shelley H. Fitzpatrick

Dir. of Curriculum & Inst.:
Amy Howard-McCormack

Principals:
Elementary: Timothy Filiatrault
Middle School/High School:
Kevin Seymour



A Message From Your Superintendent

Dear community member,

I remember writing the article for the budget newsletter last year hoping that the pandemic would be behind us by the time I had to write the next one. Unfortunately, as you all know, that didn't work out. This school year has been every bit as frustrating for all of us as it was last spring. From an educational standpoint, the challenges for our faculty and staff seem to increase by the week. I know that the stress that students and parents were forced to deal with was intense to say the least. Parents were forced to become teachers, which was something that very few of you were prepared to do. The vast majority of you couldn't find enough time in the day to provide instruction to your children. Please know that we do appreciate all of the sacrifices that you have made this year and that we intend to do everything possible to help your children moving forward. There is no doubt that some regression in learning has taken place during the pandemic for our students. It will be our job to provide intervention and extra instruction over the next several years to close the achievement gap for all students. In the next few months, we will be planning for what this will look like and which programs we will be able to implement. We will inform you of this plan as soon as it is solidified.

I would like to thank our faculty and staff for everything they have done this year. None of us could have ever prepared fully for all of the changes that we were forced to deal with on a daily basis. I could not be more proud of our team at Sandy Creek Central School District. Our teachers learned on the fly and adapted to teaching in ways that they never thought they would have to. Providing remote instruction while still teaching in-person students is not an easy task. Our teachers figured it out. It was painful and stressful, but they did what they had to for our students. Our bus drivers, cafeteria staff, nurses, cleaners and administrative staffs had to adapt as well, and none of it was easy. All of their efforts were noticed and appreciated.

A couple of weeks ago, we were very discouraged with the budget outlook for the 2021-2022 fiscal year. At that time, we were concerned that we would have to cut several staff members to balance the budget. However, we received the best news we have heard in well over a year when the state legislature presented its budget. The state legislature rose to the occasion and did the right thing by increasing the aid to schools immensely. As a result, the only cuts that will be taking place are through attrition with the retirements of several people. Those positions will not be replaced, however, no additional layoffs will happen. The ability to keep those who were to be laid off employed will provide us with the necessary personnel to address the regression in learning of our students along with the enormous amount of stimulus funds the district is to receive. This state budget increase in aid also enabled the district to become less reliant upon reserves to balance the budget, which had been ongoing for the past six years. Eventually those reserves would have been depleted. Moving forward, the district should be able to maintain the current level of the expenditure plan through normal attrition such as retirements. The 2021-2022 expenditure plan also includes a 1.22% decrease in the tax levy. That amounts to a decrease of approximately \$0.18 per \$1,000 of assessed value or \$18 on a \$100,000 property.

In closing, we wish to thank you for your continued support of our students, faculty, staff and programming. We are constantly striving to maintain an updated platform for student programs and curricula while keeping you, the taxpaying community member, in mind.

Sincerely,

Kyle L. Faulkner
Superintendent of Schools